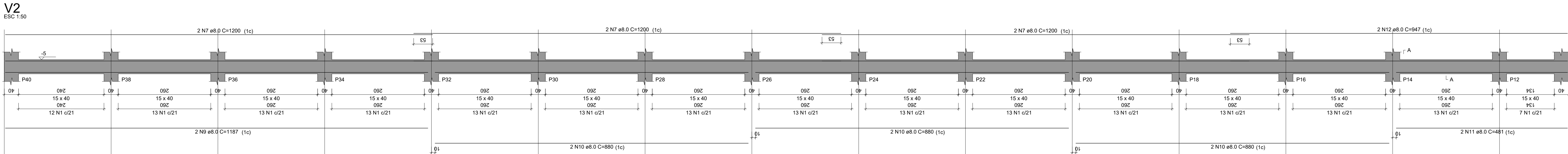
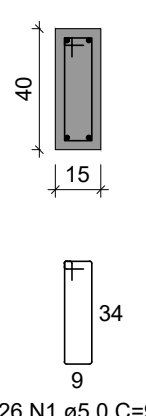
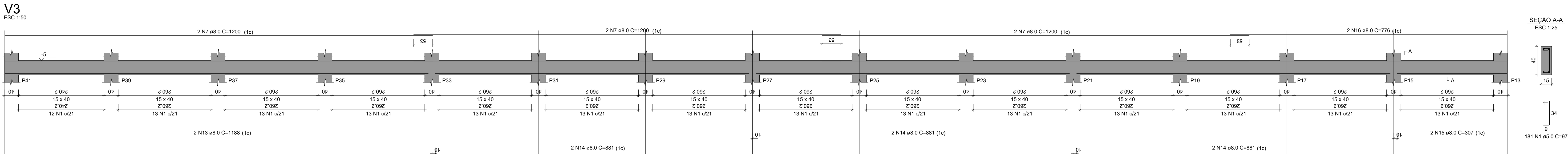
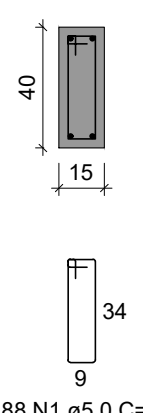


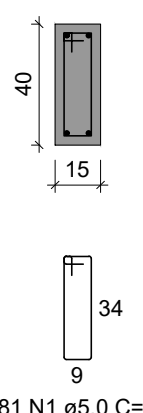
SEÇÃO A-A  
ESC 1:25



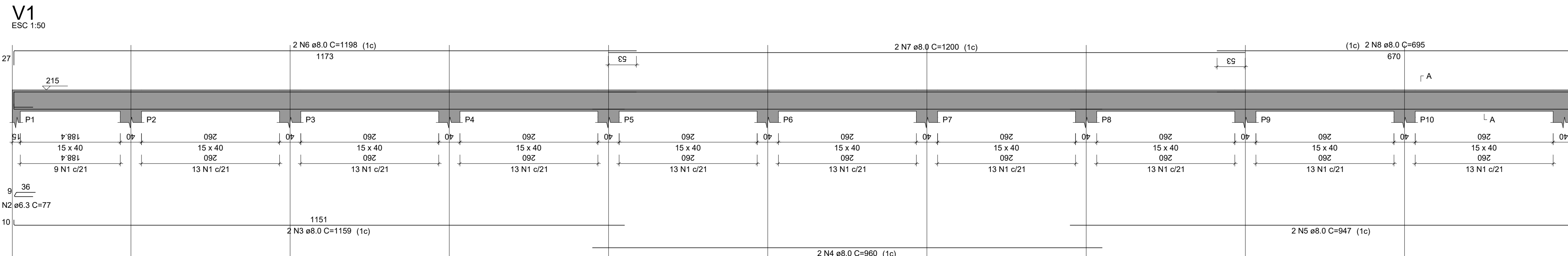
SEÇÃO A-A  
ESC 1:25



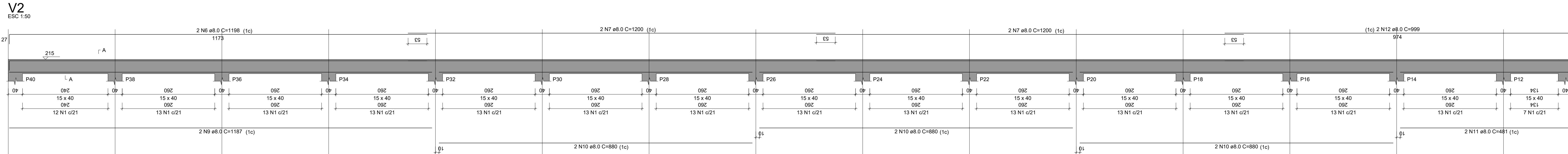
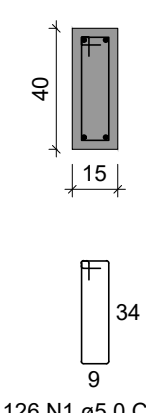
SEÇÃO A-A  
ESC 1:25



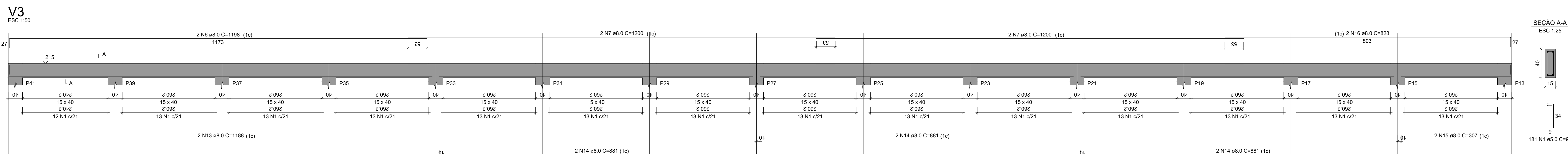
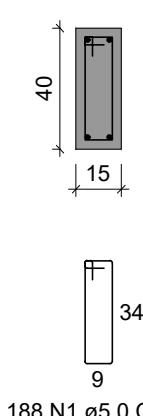
DETALHAMENTO VIGAS BALDRAME



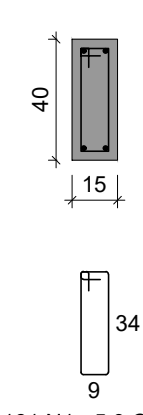
SEÇÃO A-A  
ESC 1:25



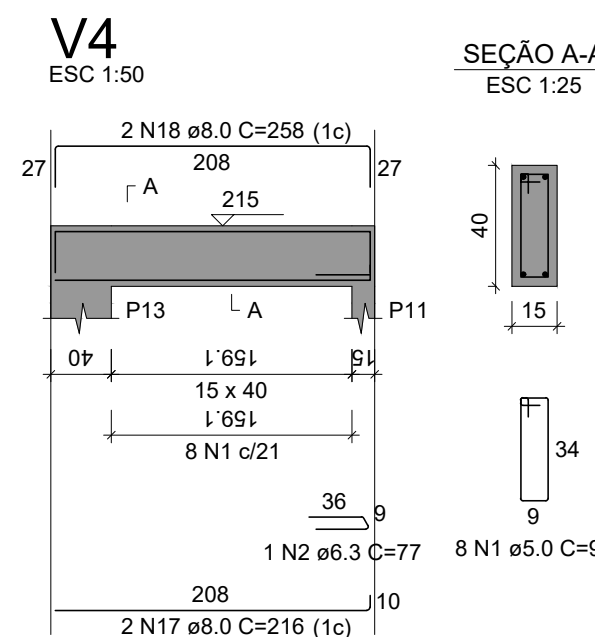
SEÇÃO A-A  
ESC 1:25



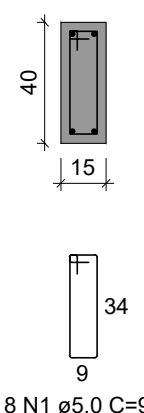
SEÇÃO A-A  
ESC 1:25



DETALHAMENTO VIGAS CINTA



SEÇÃO A-A  
ESC 1:25



RELAÇÃO DO AÇO

| ACO  | N  | DIAM (mm) | QUANT | C.UNIT (cm) | C.TOTAL (cm) |
|------|----|-----------|-------|-------------|--------------|
| CA60 | 1  | 5.0       | 503   | 97          | 48791        |
| CA60 | 2  | 6.3       | 2     | 77          | 154          |
| CA60 | 3  | 8.0       | 2     | 1159        | 2318         |
| CA60 | 4  | 8.0       | 2     | 960         | 1920         |
| CA60 | 5  | 8.0       | 2     | 947         | 1894         |
| CA60 | 6  | 8.0       | 2     | 1198        | 2396         |
| CA60 | 7  | 8.0       | 14    | 1200        | 16800        |
| CA60 | 8  | 8.0       | 2     | 670         | 1340         |
| CA60 | 9  | 8.0       | 2     | 1187        | 2374         |
| CA60 | 10 | 8.0       | 6     | 880         | 5280         |
| CA60 | 11 | 8.0       | 2     | 481         | 962          |
| CA60 | 12 | 8.0       | 2     | 999         | 1998         |
| CA60 | 13 | 8.0       | 2     | 1188        | 2376         |
| CA60 | 14 | 8.0       | 6     | 881         | 5286         |
| CA60 | 15 | 8.0       | 2     | 307         | 614          |
| CA60 | 16 | 8.0       | 2     | 626         | 1252         |
| CA60 | 17 | 8.0       | 2     | 216         | 432          |
| CA60 | 18 | 8.0       | 2     | 258         | 516          |

RESUMO DO AÇO

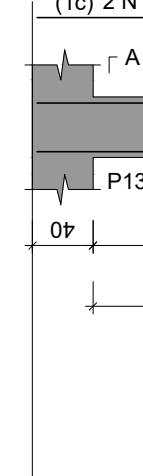
| ACO  | DIAM (mm) | C.TOTAL (m) | PESO + 10% (kg) |
|------|-----------|-------------|-----------------|
| CA60 | 6.3       | 1.5         | 487.9           |
| CA60 | 8.0       | 482         | 209.2           |
| CA60 | 5.0       | 487.9       | 82.7            |

PESO TOTAL (kg) 209.9

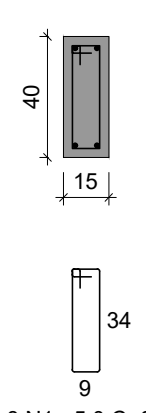
Volume de concreto (C-25) = 6.39 m³

Área de forma = 101.12 m²

V4  
ESC 1:50



SEÇÃO A-A  
ESC 1:25



RELAÇÃO DO AÇO

| ACO  | N  | DIAM (mm) | QUANT | C.UNIT (cm) | C.TOTAL (cm) |
|------|----|-----------|-------|-------------|--------------|
| CA60 | 1  | 5.0       | 503   | 97          | 48791        |
| CA60 | 2  | 6.3       | 2     | 81          | 162          |
| CA60 | 3  | 8.0       | 2     | 1159        | 2318         |
| CA60 | 4  | 8.0       | 2     | 960         | 1920         |
| CA60 | 5  | 8.0       | 2     | 947         | 1894         |
| CA60 | 6  | 8.0       | 2     | 1198        | 2396         |
| CA60 | 7  | 8.0       | 14    | 1200        | 16800        |
| CA60 | 8  | 8.0       | 2     | 670         | 1340         |
| CA60 | 9  | 8.0       | 2     | 1187        | 2374         |
| CA60 | 10 | 8.0       | 6     | 880         | 5280         |
| CA60 | 11 | 8.0       | 2     | 481         | 962          |
| CA60 | 12 | 8.0       | 2     | 947         | 1894         |
| CA60 | 13 | 8.0       | 2     | 1188        | 2376         |
| CA60 | 14 | 8.0       | 6     | 881         | 5286         |
| CA60 | 15 | 8.0       | 2     | 307         | 614          |
| CA60 | 16 | 8.0       | 2     | 776         | 1552         |
| CA60 | 17 | 8.0       | 2     | 216         | 432          |
| CA60 | 18 | 8.0       | 2     | 233         | 466          |

RESUMO DO AÇO

| ACO  | DIAM (mm) | C.TOTAL (m) | PESO + 10% (kg) |
|------|-----------|-------------|-----------------|
| CA60 | 6.3       | 1.6         | 487.9           |
| CA60 | 8.0       | 479         | 207.9           |
| CA60 | 5.0       | 487.9       | 82.7            |

PESO TOTAL (kg) 208.4

Volume de concreto (C-25) = 6.37 m³

Área de forma = 100.90 m²

RUBENS LUIS ROLANDO SOUZA

ENGENHEIRO CIVIL

CREA RS 98.296/D

PROJETO ESTRUTURAL

PREFEITURA MUNICIPAL DE CAPANEMA

CONSTRUÇÃO DE MURO  
PROGRAMA INFÂNCIA FELIZ - PROJETO PADRÃO DE CRECHES - 456,86m²  
CRECHE SANTA BARBARA  
DETALHAMENTO VIGAS BALDRAME e CINTA

Rua Carriis, Lote Nº 52-B Gleba 135-CP, Bairro Sta Bárbara

Desenho: Eng Rubens

Data: 26/05/2025

Área: -

Unidade: cm

Escala: 01/100

Prancha: 07/07